

9 September  
Sydney Opera House

# YEOL EUM SON PERFORMS MOZART

SYDNEY  
SYMPHONY  
ORCHESTRA

Principal Partner



# SYDNEY SYMPHONY ORCHESTRA

PATRON **Her Excellency The Honourable Margaret Beazley** AC QC

Founded in 1932 by the Australian Broadcasting Commission, the Sydney Symphony Orchestra has evolved into one of the world’s finest orchestras as Sydney has become one of the world’s great cities. Resident at the iconic Sydney Opera House, the Sydney Symphony Orchestra also performs in venues throughout Sydney and regional New South Wales, and international tours to Europe, Asia and the USA have earned the Orchestra worldwide recognition for artistic excellence.

The Orchestra’s first chief conductor was Sir Eugene Goossens, appointed in 1947; he was followed by Nicolai Malko, Dean Dixon, Moshe Atzmon, Willem van Otterloo, Louis Frémaux, Sir Charles Mackerras, Zdeněk Mácal, Stuart Challender, Edo de Waart and Gianluigi Gelmetti. Vladimir Ashkenazy was Principal Conductor from 2009 to 2013, followed by David Robertson as Chief Conductor from 2014 to 2019. Australia-born Simone Young commences her role as Chief Conductor this year, as the Orchestra also makes its return to a renewed Sydney Opera House Concert Hall.

The Sydney Symphony Orchestra’s concerts encompass masterpieces from the classical repertoire, music by some of the finest living composers, and collaborations with guest artists from all genres, reflecting the Orchestra’s versatility and diverse appeal. Its award-winning education program is central to its commitment to the future of live symphonic music, and the Orchestra promotes the work of Australian composers through performances, recordings and its commissioning program.

## Simone Young

Chief Conductor

## Donald Runnicles

Principal Guest  
Conductor

## Vladimir Ashkenazy

Conductor Laureate

## Andrew Haveron

Concertmaster  
Chair supported by  
Vicki Olsson

## FIRST VIOLINS

## Andrew Haveron

Concertmaster

## Harry Bennetts

Associate  
Concertmaster

## Sun Yi

Associate  
Concertmaster

## Fiona Ziegler

Assistant  
Concertmaster

Jennifer Booth  
Brielle Clapson  
Sophie Cole  
Claire Herrick  
Georges Lentz  
Emily Long  
Alexandra Mitchell  
Alexander Norton  
Anna Skálóvá  
Léone Ziegler  
Sercan Danis\*  
Cristina Vaszilcsin\*

## Lerida Delbridge

Assistant  
Concertmaster  
Nicola Lewis

## SECOND VIOLINS

## Kirsty Hilton

Principal

## Marianne Edwards

Associate Principal

## Emma Jezek

Assistant Principal

Victoria Bihun  
Rebecca Gill  
Emma Hayes  
Wendy Kong  
Benjamin Li  
Nicole Masters  
Maja Verunica  
Amanda Chen\*  
Riikka Sintonen\*  
Benjamin Tjoo\*

## Marina Marsden

Principal

Alice Bartsch  
Shuti Huang  
Monique Irik

## VIOLAS

## Tobias Breider

Principal

## Amanda Verner

Acting Principal

## Anne-Louise

Comerford

Associate Principal

## Justin Williams

Assistant Principal

Sandro Costantino  
Rosemary Curtin  
Jane Hazelwood  
Graham Hennings  
Stuart Johnson  
Justine Marsden  
Felicity Tsai  
Leonid Volovelsky

## CELLOS

## Catherine Hewgill

Principal

## Leah Lynn

Acting Associate

Principal

Kristy Conrau  
Christopher Pidcock  
Adrian Wallis  
Miles Mullin-Chivers\*  
Eliza Sdraulig\*  
Noah Oshiro\*  
Fenella Gill  
Timothy Nankervis  
Elizabeth Neville  
David Wickham

## DOUBLE BASSES

## Kees Boersma

Principal

David Campbell  
Steven Larson  
Richard Lynn  
Benjamin Ward  
Oliver Simpson\*  
Hayley Witmore\*

## Alex Henery

Principal

Jaan Pallandi

## FLUTES

## Joshua Batty

Principal

Carolyn Harris

## Lloyd Hudson

Guest Principal Piccolo\*

## Emma Shall

Associate Principal

## OBOES

## Diana Doherty

Principal

Callum Hogan

## Alexandre Oguey

Principal Cor Anglais

## Shefali Pryor

Associate Principal

## CLARINETS

## Francesca Celata

Acting Principal

Christopher Tingay

## Alexander Morris

Principal Bass Clarinet

## BASSOONS

## Todd Gibson-Cornish

Principal

Fiona McNamara

## Noriko Shimada

Principal

Contrabassoon

## Matthew Wilkie

Principal Emeritus

## HORNS

## Euan Harvey

Acting Principal

Marnie Sebire

Rachel Silver

Claudia Leggett\*

Lee Wadenpfuhl\*

## Geoffrey O'Reilly

Principal 3rd Horn

## TRUMPETS

## David Elton

Principal

Anthony Heinrichs

Dominic Longhurst\*

## Brent Grapes

Associate Principal

Trumpet

## TROMBONES

## Ronald Prussing

Principal

## Scott Kinmont

Associate Principal

## Christopher Harris

Principal Bass

Trombone

Nick Byrne

## TUBA

## Steve Rossé

Principal

## TIMPANI

## Mark Robinson

Acting Principal

## PERCUSSION

## Rebecca Lagos

Principal

Timothy Constable

Joshua Hill\*

Brian Nixon\*

Alison Pratt\*

## HARP

## Lucy Reeves

Guest Principal\*

## PIANO

## Susanne Powell

Guest Principal\*

\* = Guest Musician

# = Contract Musician

† = Sydney Symphony  
Fellow

Grey = Permanent  
Member of the Sydney  
Symphony Orchestra  
not appearing in  
this concert

TEA & SYMPHONY

Friday 9 September, 11am  
Concert Hall,  
Sydney Opera House

# YEOL EUM SON PERFORMS MOZART

MASTERS OF DRAMA

**EDO DE WAART** conductor  
**YEOL EUM SON** piano

## ANDREW HOWES

*Luminifera – Wild Light for Orchestra\**

## WOLFGANG AMADEUS MOZART (1756-1791)

Piano Concerto No.20 in D minor, K.466

i. *Allegro*

ii. *Romance*

iii. *Rondo (Allegro assai)*

## JOHANNES BRAHMS (1833-1897)

*Variations on a theme by Haydn, Op.56a*

## ESTIMATED DURATIONS

8 minutes, 30 minutes,  
17 minutes

The concert will conclude  
at approximately 12pm.

## COVER IMAGE

Wolfgang Amadeus Mozart  
Painting by Barbara Krafft

\*Andrew Howes' commission for the Sydney Symphony Orchestra's  
50 Fanfares Project is generously supported by Ken & Liz Nielsen

Yeol Eum Son's performances with Sydney Symphony Orchestra  
have been generously supported by The Berg Family Foundation.

PRINCIPAL PARTNER



# ABOUT THE ARTISTS

## **EDO DE WAART** conductor

Throughout his long and illustrious career, renowned Dutch conductor Edo de Waart has held a multitude of posts with orchestras around the world. A former Chief Conductor of the Sydney Symphony Orchestra (1994–2003), de Waart has held Music Directorships with San Francisco Symphony and San Francisco Opera, Minnesota Orchestra, New Zealand Symphony Orchestra, Hong Kong Philharmonic and Rotterdam Philharmonic Orchestra, and a Chief Conductorship with De Nederlandse Opera. He has also held posts with Saint Paul Chamber Orchestra and Santa Fe Opera, and also holds the position of Music Director Laureate at Milwaukee Symphony Orchestra.

De Waart celebrated his 80th birthday in 2021 with a series of special concerts with Netherlands Radio Philharmonic Orchestra, where he holds the position of Conductor Laureate. Edo de Waart now celebrates his third year as Principal Guest Conductor of San Diego Symphony Orchestra and continues his role as Conductor Laureate of Antwerp Symphony Orchestra.

As an opera conductor, de Waart has enjoyed success in a large and varied repertoire in many of the world's greatest opera houses. He has conducted at Bayreuth, Royal Opera House, Covent Garden, Grand Théâtre de Genève, Opéra Bastille, Santa Fe Opera, and The Metropolitan Opera.

De Waart's extensive recorded catalogue encompasses releases for Philips, Virgin, EMI, Telarc and RCA. Recent recordings include Henderickx's Symphony No.1 and Oboe Concerto, Mahler's Symphony No.1 and Elgar's *Dream of Gerontius*, all with the Royal Flemish Philharmonic.

Beginning his career as an Assistant Conductor to Leonard Bernstein at the New York Philharmonic, de Waart then returned to Holland where he was appointed Assistant Conductor to Bernard Haitink at the Royal Concertgebouw Orchestra.

Edo de Waart has received a number of awards for his musical achievements, including becoming a Knight in the Order of the Netherlands Lion and an Honorary Officer in the General Division of the Order of Australia. He is also an Honorary Fellow of the Hong Kong Academy for Performing Arts.



Edo de Waart,  
photo by Jesse Willems

# ABOUT THE ARTISTS

## **YEOL EUM SON** piano

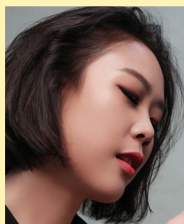
Multi-award-winning South Korean pianist Yeol Eum Son is famed for her power, her poetry and her remarkably perceptive playing. Her graceful and timeless interpretations, crystalline touch and versatile, thrilling performances have caught the attention of audiences worldwide. She is highly regarded as a brilliant virtuoso whose playing has a rare balance between enormous kinetic energy and substantial gravity. Yeol Eum performs all over the world as a recitalist and soloist with orchestras. An avid chamber musician, in 2018 Yeol Eum was appointed Artistic Director of Music in PyeongChang festival, responsible for programming both summer and winter editions at the Olympic site in PyeongChang.

Praised for her eclectic and rich repertoire, ranging from Bach, Mozart, early German and Russian Romantic to Gershwin, Szymanowski, Ligeti and Salonen, Yeol Eum has collaborated with major ensembles and festivals worldwide.

In the current season, Yeol Eum is Artist in Residence with the Residentie Orchestra in the Hague, and will debut with the BBC National Orchestra of Wales, Scottish Chamber Orchestra, Finnish Radio Symphony, NDR Radiophilharmonie Hanover, Orquesta Sinfónica del Principado de Asturias and Musikkollegium Winterthur. She will debut with the Sydney Symphony Orchestra as well as the Melbourne, Tasmanian and Detroit Symphony Orchestras and the Saint Paul Chamber Orchestra.

Widely recognised for her interpretation of Mozart's Piano Concertos, Yeol Eum released a highly acclaimed album on Onyx featuring Mozart's Piano Concerto No.21 with the Academy of St Martin in the Fields under the late Sir Neville Marriner, his very last recording.

Yeol Eum is Honorary Ambassador of the Seoul Arts Center and her home city of Wonju. A double Second Prize winner of the Tchaikovsky International Piano Competition (2011) and the 13th Van Cliburn International Piano Competition (2009), she was a student of Arie Vardi at the Hochschule für Musik Theater und Medien Hannover, Germany. She holds a degree from the Korean National University of Arts.



Yeol Eum Son,  
photo by Woongchul An

*Yeol Eum Son's performances with Sydney Symphony Orchestra have been generously supported by The Berg Family Foundation.*

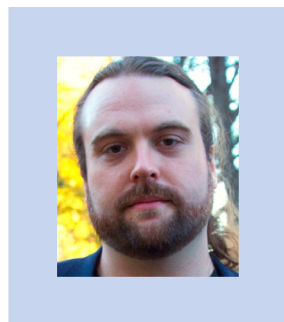


# ABOUT THE MUSIC

A 50 Fanfares commission, *Luminifera* was composed by Andrew Howes, whose mother Rosamund Plummer was the Orchestra's Principal Piccolo for many years. The composer writes that the piece:

*is named in homage to a 17th century light hypothesis, which postulated a medium in which light could traverse a vacuum, called Luminiferous Aether. My rewrite of the name now translates as Wild Light, and I was inspired conceptually by imagining beams of light traversing the universe at unimaginable speed, striking and bouncing upon millions of surfaces almost endlessly. As I explored musical ideas that could match the concept I had established, I looked to the intervals of the harmonic series, which are the core building blocks of all sound. The harmonic series is especially important to brass instruments, and so they became the central sound of the piece, and the piece became a fanfare. It was an immense joy to compose this work for the Sydney Symphony, the orchestra I grew up hearing and whose sound I have always pictured when writing orchestral music, and I am grateful to the Sydney Symphony Orchestra's 50 Fanfares project for making it possible.*

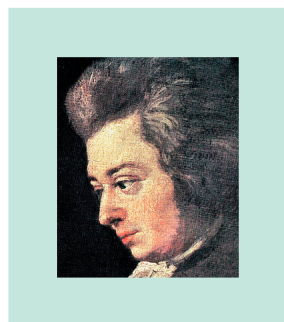
*Luminifera* was made possible through the Sydney Symphony Orchestra's 50 Fanfares Project and was commissioned by the Sydney Symphony Orchestra, supported by Ken & Liz Nielsen.



Andrew Howes

The first of the two piano concertos for which Mozart chose the minor mode is one of his most often heard works, and one of his most admired. Even in the 19th century, when much of his music was in eclipse, this concerto was played and regarded as representing the 'daemonic' Mozart. Beethoven played it and wrote cadenzas for it. In 1839 Schumann singled out this concerto: 'Our younger master will certainly not forget how the older ones would suddenly emerge with something magnificent – Mozart's Concerto in D minor, Beethoven's in G.'

Such fame is a problem: Charles Rosen remarks of this concerto, in his book *The Classical Style*, that we have to ask ourselves whether we are hearing the work of art or its reputation. There may be people who are hearing the concerto for the first time



Mozart, portrait by Joseph Lange

# ABOUT THE MUSIC

tonight, with fresh ears. The stormy drama of the work can hardly fail to make an impression of great, but controlled emotion and power.

This concerto is not incontestably better than the nine others Mozart wrote in 1784 and 1785, but it is distinguished from them by the intensity of its subjective approach. It has often been hailed as being like Beethoven, a form of praise which tends to obscure its special qualities and their sources. As familiarity has grown with the music of Mozart, Haydn and their predecessors, we have come to see that the late 18th century had its own deep vein of Storm and Stress, of passionate expression. There is, for example, a remarkable D minor keyboard concerto by Carl Philipp Emanuel Bach which has some of the same feeling as this one by Mozart. One respect in which its music could be admitted to be Beethovenian is that the strife and passion persist until the change of mood in the last bars of the *Rondo*.

The first 15 bars of this concerto express the character of the whole of the first movement: throbbing, syncopated strings underlined by gruff bass triplets, rhythmic instability pushed as far as the Classical style would allow. Instead of turning to develop lighter material in the major key, this exposition retraces its steps to the mood of the opening, through orchestral tuttis of a violence unprecedented in Mozart's work.

The piano's first entry, in free recitative, is very moving – like the voice of one against the many, and this principle of opposition is much exploited throughout. With piano added to orchestra, the sustained and graded acceleration begins which gives this concerto much of its excitement. The piano's recitative opens the development or fantasia section, but does not return in the recapitulation – the development adds further to the concentration of the movement by using material from the exposition, rather than introducing new themes, as Mozart often does.

Beethoven's cadenza, though grandiose and headstrong, is a revealing commentary – one great creator and interpreter responding to another. Alfred Einstein has written suggestively of the pianissimo conclusion to the movement that it is

# ABOUT THE MUSIC

‘as if the furies had simply become tired out and had lain down to rest, still grumbling, and ready at any time to take up the fight again...’

The slow movement begins in complete contrast, in an unexpected key (B flat major), fresh and poised. It proceeds as a spacious rondo, but as the second episode begins, is startlingly transformed. A raging presto in G minor begins in breathless triplets, which should be played, according to a letter of Mozart’s father Leopold, ‘as swiftly as the possibility of bringing out the tune clearly allows.’ The return to the rondo theme is made in a transition of great breadth, like a horseman reining in his steed. This violent contrast within the movement would make no sense, as Rosen points out, if the slow movement was isolated from the others. The furies of the first movement have taken up the fight again.

The last movement is one of Mozart’s few minor key rondos, but its turn to the major key towards the end, playing with more cheerful material, has provoked some disappointment from those who would judge this concerto by non-Mozartian aesthetic standards. The rocket-like theme with which the piano begins and the sustained violence of the first orchestral tutti are of a piece with the first movement, and the conciliatory character of the ending, besides being memorably jaunty and good-humoured, is perhaps best considered as a restoring of 18th-century balance, a desire to leave the audience with a friendly impression.

The violinist Joseph Joachim once reassured a youthful Brahms, who had pestered him anxiously for an opinion on his new *Variations on a theme by Schumann*, ‘If I could, I would turn every one of the Variations into a triumphal arch and the theme into a laurel wreath for you to wear as I led you through them, you young Emperor of Music!’

For Brahms, like Haydn and Beethoven before him, the variation form was central to his musical life. While he declared a ‘particular affection’ for the form, which he argued should be used more creatively and with greater freedom, his own exploration of variation form nevertheless remained conservative, a challenge to his ingenuity in



Brahms, around 1875



# ABOUT THE MUSIC

remaining faithful to the theme. His creativity shone in spinning off entirely new ideas from fragments of the original theme.

Brahms was at a crossroads when he came, aged 40, to consider a theme from an old manuscript apparently by Haydn. He was in 1873 still three years from completing his long-gestating first symphony. His experience of the art of orchestration was limited to a first piano concerto and a pair of serenades, all composed long before he had even arrived from his native Hamburg in 1862 to make a permanent home in Vienna.

Now, in his *Variations on a theme by Haydn*, the composer turned two notable corners. Composing the work in two separate versions more or less concurrently, one for two pianos (Op.56b) and one for orchestra (Op.56a), Brahms on one hand closed his career as a composer of major piano works – henceforth there would be only miniatures; and on the other hand he created, triumphantly, the world's first free-standing variations for orchestra. At the same time, in his confident and subtle mastery of a constantly varying instrumental palette through ten distinct environments (theme, eight variations and finale), he announced his arrival as an orchestrator.

The 'theme by Haydn' had been discovered and shown to Brahms three years previously by his Viennese friend Carl Ferdinand Pohl, librarian of the Society of the Friends of Music and Haydn's first comprehensive biographer. Pohl had unearthed a set of half a dozen wind band divertimenti, or *Feldparthien* (literally, field partitas), in which it appeared, as the second movement of the last, under the heading *Corale St Antonii*. All six divertimenti are now considered spurious, possibly by Ignaz Pleyel, and the St Antony Chorale itself perhaps an old Austrian pilgrims' hymn.

Brahms in his opening statement of the theme consciously imitates the early Classical wind sonorities in the original divertimento. He reserves his upper strings for the actual variations, which follow, as John Horton has suggested, in a loosely symphonic sequence – energetic in the first

# ABOUT THE MUSIC

three variations; Romantically melancholy in the fourth (*Andante con moto*); scherzo-like in 5, 6 and 8, with Variation 7 (*Grazioso*) a contrasting centrepiece; and gloriously cumulative in a passacaglia finale which builds in Bachian fashion from a ground bass constantly reiterating the first five bars of the St Antony theme.

The bell-like tolling of the note B flat from the end of the theme echoes constantly through Variation 1, interwoven with sweeping string figures. Variation 2, in the minor, propels each scampering phrase with a peremptory shove, but the more delicate Variation 3 flows placidly, evoking Romantic horn sighs. The poignant expressiveness of the minor-key Variation 4, based on two new, wistfully flowing melodies, is achieved with a deceptive simplicity which refuses to proclaim its extraordinary contrapuntal skill.

The impetuous Variation 5 pits different rhythms against each other within a basic 6/8 metre and a swaggering march follows in the equally brilliant Variation 6. The languorous *siciliano* of Variation 7 is another contrapuntal tour de force with glowing Brahmsian harmonies. A final, fleeting ghost-like variation – the third in the minor – leads to the solemn ground bass of the finale, a mere ten notes from which Brahms builds a kaleidoscopic edifice, rising inexorably to a majestic return of the full chorale theme.

Brahms' unprecedented use of a passacaglia, or ground bass, finale to a set of variations is both a homage to the towering example of Bach and an advance hint of the great passacaglia, based on a theme of Bach himself, with which, 12 years later, he would close his fourth, and final, symphony.

Notes by Andrew Howes (© 2022), David Garrett (Mozart, © 2001), Anthony Cane (Brahms, © 2004).

# ORCHESTRA CHAIR PATRONS

**Andrew Haveron**

Concertmaster  
*Vicki Olsson Chair*

**Harry Bennetts**

Associate Concertmaster  
*Judy & Sam Weiss Chair*

**Victoria Bihun**

Violin  
*Sylvia & the late Sol Levi Chair*

**Kees Boersma**

Principal Double Bass  
*Council Chair, with lead support  
from Brian Abel*

**Tobias Breider**

Principal Viola  
*Roslyn Packer AC & Gretel Packer AM Chair*

**Nick Byrne**

Trombone  
*Robertson Family Chair*

**Anne-Louise Comerford**

Associate Principal Viola  
*White Family Chair*

**Timothy Constable**

Percussion  
*Christine Bishop Chair*

**Rosemary Curtin**

Viola  
*John & Jane Morschel Chair*

**Lerida Delbridge**

Assistant Concertmaster  
*Simon Johnson Chair*

**Diana Doherty**

Principal Oboe  
*John C Conde AO Chair*

**Marianne Edwards**

Associate Principal Second Violin  
*Dr Rebecca Chin & Family Chair*

**David Elton**

Principal Trumpet  
*Anne Arcus Chair*

**Todd Gibson-Cornish**

Principal Bassoon  
*Nelson Meers Foundation Chair*

**Rebecca Gill**

Violin  
*Dr John Lam-Po-Tang Chair,  
in memory of Reg & Jeannette Lam-Po-Tang*

**Carolyn Harris**

Flute  
*Landa Family Chair,  
in memory of Dr Barry Landa*

**Jane Hazelwood**

Viola  
*Bob & Julie Clampett Chair,  
in memory of Carolyn Clampett*

**Claire Herrick**

Violin  
*Russell & Mary McMurray Chair*

**Catherine Hewgill**

Principal Cello  
*The Hon. Justice AJ & Mrs Fran Meagher Chair*

**Kirsty Hilton**

Principal Second Violin  
*Drs Keith & Eileen Ong Chair*

**Scott Kinmont**

Associate Principal Trombone  
*Audrey Blunden Chair*

**Rebecca Lagos**

Principal Percussion  
*I Kallinikos Chair*

**Emily Long**

Violin  
*Dr Margot Harris Chair*

**Nicole Masters**

Violin  
*Nora Goodridge OAM Chair*

**Fiona McNamara**

Bassoon  
*Nelson Meers Foundation Chair*

**Elizabeth Neville**

Cello  
*Bob Magid OAM & Ruth Magid Chair*

**Alexandre Oguey**

Principal Cor Anglais  
*Mackenzie's Friend Chair*

**Mark Robinson**

Associate Principal/Section Percussion  
*Robert Albert AO & Elizabeth Albert Chair*

**Marnie Sebire**

Horn  
*Judge Robyn Tupman Chair*

**Emma Sholl**

Associate Principal Flute  
*Robert & Janet Constable Chair*

**Rachel Silver**

Horn  
*Sue Milliken AO Chair*

**Matthew Wilkie**

Principal Emeritus Bassoon  
*Nelson Meers Foundation Chair*

**Justin Williams**

Assistant Principal Viola  
*Robert & L Alison Carr Chair*

**Fiona Ziegler**

Assistant Concertmaster  
*Webb Family Chair,  
in memory of Dr Bill Webb & Helen Webb*

# THANK YOU

Every gift makes a difference. We gratefully acknowledge the generosity of our community, including those who wish to remain anonymous.

## VISIONARIES

Brian Abel  
Geoff Ainsworth AM & Johanna Featherstone  
Antoinette Albert  
Terrey Arcus AM & Anne Arcus  
The Berg Family Foundation  
Robert & Janet Constable  
Crown Resorts Foundation  
Dr Gary Holmes & Dr Anne Reeckmann  
Dr Rachael Kohn AO & Tom Breen  
Sir Frank Lowy AC & the late Lady Shirley Lowy OAM  
Mackenzie's Friend  
Bob Magid OAM & Ruth Magid  
Anthony & Suzanne Maple-Brown  
Neilson Foundation  
Vicki Olsson  
Drs Keith & Eileen Ong  
Roslyn Packer AC (President, Maestro's Circle)  
Packer Family Foundation  
Patricia H Reid Endowment Pty Ltd  
Doris Weiss & the late Peter Weiss AO  
(President Emeritus, Maestro's Circle)  
Judy & Sam Weiss

## MAESTRO'S CIRCLE

Robert Albert AO & Elizabeth Albert  
Christine Bishop  
Dr Rebecca Chin  
John C Conde AO  
Ian Dickson AM & Reg Holloway  
Edward & Diane Federman  
Nora Goodridge OAM  
Dr Margot Harris  
Ingrid Kaiser  
I Kallinikos  
Dr John Lam-Po-Tang  
Sharon & Anthony Lee Foundation  
Ian Levi AM & Ann Levi  
Susan Maple-Brown AM  
Catriona Morgan-Hunn  
Nelson Meers Foundation  
The Ross Trust  
Paul Salteri AO & Sandra Salteri  
In memory of Mrs W Stening  
In memory of Dr Bill Webb & Helen Webb  
Kathy White  
Caroline Wilkinson OAM  
Ray Wilson OAM, in memory of  
James Agapitos OAM  
June & Alan Woods Family Bequest

## PATRONS PROGRAM

**\$15,000+**  
Ainsworth Foundation  
Doug & Alison Battersby  
Dugald Black  
Audrey Blunden  
Robert & L Alison Carr  
Bob & Julie Clampett  
Darin Cooper Foundation  
Carolyn Githens  
Simon Johnson  
Roland Lee  
Warren & Marianne Lesnie  
Sylvia & the late Sol Levi  
Russell & Mary McMurray  
The Hon. Justice AJ Meagher & Fran Meagher  
John & Jane Morschel  
Janet & Michael Neustein  
Nigel & Carol Price  
Kenneth R Reed AM  
Geoffrey Robertson AO  
Graeme Robertson  
Tim Robertson SC  
In memory of Joyce Sproat  
James Stening  
Judge Robyn Tupman

**\$10,000+**  
Rob Baulderstone & Mary Whelan  
Daniel & Drina Brezniak  
Sandra & Neil Burns  
Hon J C Campbell QC & Mrs Campbell  
Roxane Clayton  
Richard Cobden SC  
Richard A Flanagan III  
Dr Bruno & Rhonda Giuffre  
The Greatorex Fund  
The Hilmer Family Endowment  
Kimberley & Angus Holden  
Jim & Kim Jobson  
Ervin Katz  
Justice Francois Kunc & Felicity Rourke  
Levins Family Foundation  
Helen Lynch AM & Helen Bauer  
Dr Lee MacCormick Edwards Charitable  
Foundation  
Sue Milliken AO  
Dr Dominic Pak & Cecilia Tsai  
Penelope Seidler AM  
Dougall & Elizabeth Squair  
Geoff Stearn  
Tony Strachan  
Howard Tanner AM & Mary Tanner  
Geoff & Alison Wilson  
Pat Woolley & Russell Tagg  
Yim Family Foundation

# THANK YOU

## SUPPORTERS PROGRAM

### \$5,000+

Stephen J Bell  
Dr Victor Bien & Silvana d'Iapico  
Beverley & Phil Birnbaum  
Boyarsky Family Trust  
In memory of Rosemary Boyle, Music Teacher  
Maggie Brown  
Margot Chinneck  
B & M Coles  
Howard & Maureen Connors  
Heather & Malcolm Crompton  
Ewen Crouch AM & Catherine Crouch  
Donus Australia Foundation Limited  
Suellen & Ron Enestrom  
Sarah & Tony Falzarano  
Dr Greg Gard & Dr Joanne Grimsdale  
Dr Colin Goldschmidt  
Harry Goldsmith  
Dr Jan Grose OAM  
Richard Hansford  
James & Yvonne Hochroth  
Peter M Howard  
Dr Brian Hsu & Felicity Hsu  
Stephen Johns & Michele Bender  
Andrew Kaldor AM & Renata Kaldor AO  
Gabriel Lopata  
John & Sophia Mar  
Mora Maxwell  
Robert McDougall  
Judith A McKernan  
Karen Moses  
Dr Gaston Nguyen & Robert Veel  
Jean-Claude Niederer & Neil Hendry  
Jackie O'Brien  
Andrew Patterson & Steven Bardy  
Stephen Perkins  
Sylvia Rosenblum  
Shah Rusiti  
Rod Sims AO & Alison Pert  
Dr Agnes E Sinclair  
Dominic Taranto & Anthony Cassidy  
Russell Van Howe & Simon Beets  
Robert & Rosemary Walsh  
The Hon. Justice A G Whealy  
Dr John Yu AO

### \$2,500+

Colin & Richard Adams  
Dr Richard Balanson & Dawn Talbot  
Minnie Biggs  
In memory of R W Burley  
Ian & Jennifer Burton  
Ita Buttrose AO OBE  
Miguel Carrasco & Renee Martin  
Debra Collignon

Dr Paul Collett  
Elizabeth Conti  
Debby Cramer & Bill Caukill  
Katarina Cvitkovic  
Greta Davis  
Lisa & Miro Davis  
Susan & Roger Doenau  
Professor Jenny Edwards  
John Ellacott  
Paul Espie AO  
Ian Fenwicke & the late Prof Neville Wills  
Elisabeth Fidler  
Andrea Govaert & Wik Farwerck  
AM Gregg & DM Whittleston  
Peter & Yvonne Halas  
Dr Joanne Hart & Adam Elder  
David Jeremy  
Dr Owen Jones & Vivienne Goldschmidt  
W G Keighley  
Professor Andrew Korda AM & Susan Pearson  
A/Prof Winston Liauw & Ellen Liauw  
Juliet Lockhart  
Dr Carolyn Lowry OAM & Peter Lowry OAM  
Renee Markovic  
Jeannette McHugh  
Matthew McInnes  
Margaret McKenna  
Dr V Jean McPherson  
Phil & Helen Meddings  
James & Elsie Moore  
Janet Newman  
Mr & Mrs Colin Nicholson  
Rachel Oberon  
Graham Quinton  
Ernest Rapee  
Suzanne Rea & Graham Stewart  
Dr Wendy Roberts  
Andrew Rosenberg  
Jacqueline Rowlands  
Tony Schlosser  
Barbara & Bruce Solomon  
Dr Vladan Starcevic  
Rosemary Swift, in memory of Leon Garry OAM  
Jane Thornton OAM & Peter Thornton  
Kevin J. Troy  
Jerry Whitcomb  
A. Wilmers & R. Pal  
Natalie Yamey

For a full listing of our Sydney Symphony family of donors, please visit [sydneyssymphony.com/our-supporters](https://sydneyssymphony.com/our-supporters).

To discuss your giving or learn which areas most need your support, please contact our Philanthropy team on **02 8215 4674** or [philanthropy@sydneyssymphony.com](mailto:philanthropy@sydneyssymphony.com).

# THANK YOU

## PRINCIPAL PARTNER



## GOVERNMENT PARTNERS



The Sydney Symphony Orchestra is assisted by the Commonwealth Government through the Australia Council, its arts funding and advisory body.



The Sydney Symphony Orchestra is supported by the NSW Government through Create NSW.



## PREMIER PARTNER



## MAJOR PARTNER



Abercrombie & Kent

## BRAND AGENCY / PLATINUM PARTNER



## GOLD PARTNERS



## SILVER PARTNERS



## COMMUNITY AND INDUSTRY PARTNERS



## FOUNDATIONS





PATRON

Her Excellency The Honourable  
Margaret Beazley AC QC

BOARD

Geoff Wilson *Chair*  
Andrew Baxter *Deputy Chair*  
Geoff Ainsworth AM  
Kees Boersma  
Susan Ferrier  
Catherine Hewgill  
The Hon. Justice AJ Meagher  
Sam Meers AO  
Roslyn Packer AC

COUNCIL

PATRON EMERITUS, SYDNEY  
SYMPHONY ORCHESTRA COUNCIL

Professor The Honourable  
Dame Marie Bashir AD CVO  
  
Brian Abel  
Doug Battersby  
Christine Bishop  
Dr Rebecca Chin  
Paul Colgan  
John C Conde AO  
Catherine Crouch  
Ewen Crouch AM  
The Hon. John Della Bosca  
Her Hon. Judge Gillian Eldershaw  
Alan Fang  
Johanna Featherstone  
Hannah Fink  
Erin Flaherty  
Dr Stephen Freiberg  
Dorothy Hoddinott AO  
Dr Gary Holmes  
Robert Joannides  
Michelle Anne Johnson  
Simon Johnson  
Dr John Lam-Po-Tang  
Gary Linnane  
Helen Lynch AM  
David Maloney AM  
Danny May  
Fran Meagher  
Jane Morschel  
Taine Moufarrige  
Dr Eileen Ong  
Andy Plummer  
Deirdre Plummer  
Seamus Robert Quick  
Dr Anne Reeckmann  
Chris Robertson  
Paul Salteri AO  
Sandra Salteri  
Rachel Scanlon  
Juliana Schaeffer  
Andrew Shapiro  
Kate Shaw  
Ali Smyth  
Fred Stein OAM  
James Stening  
Russell Van Howe  
Mary Whelan  
Brian White AO  
Kathy White  
Rosemary White  
Andrew Wiseman

HONORARY COUNCIL

Ita Buttrose AC OBE  
Donald Hazelwood AO OBE  
Yvonne Kenny AM  
Wendy McCarthy AO  
Dene Olding AM  
Leo Schofield AM

MANAGEMENT & STAFF

INTERIM CHIEF EXECUTIVE OFFICER  
Craig Whitehead

EXECUTIVE OFFICER  
Sheridan Morley

ARTISTIC PLANNING

DIRECTOR OF ARTISTIC PLANNING  
Melissa King  
  
ARTISTIC PLANNING MANAGER  
Sam Torrens  
  
SENIOR PRODUCER, ARTISTIC PLANNING  
Karl Knapp  
  
ARTIST LIAISON MANAGER  
Ilmar Leetberg  
  
ARTISTIC ADMINISTRATOR  
Cosima Toni

Library

HEAD OF LIBRARY SERVICES  
Alastair McKean  
  
LIBRARY  
Victoria Grant  
Mary-Ann Mead

Education

HEAD OF EDUCATION & COMMUNITIES  
Sonia de Freitas  
  
EDUCATION & COMMUNITY  
ENGAGEMENT PRODUCER  
Meklit Kibret  
  
EDUCATION & COMMUNITIES  
PROGRAM ADMINISTRATOR  
Daniella Pasquill

BUSINESS SERVICES

DIRECTOR OF FINANCE  
Sarah Falzarano  
  
FINANCE MANAGER  
Daniela Ramirez  
  
ACCOUNTANT  
Minerva Prescott  
  
ACCOUNTS ASSISTANT  
Emma Ferrer  
  
PAYROLL MANAGER  
Laura Soutter  
  
IT MANAGER  
Jonathan Zaw  
  
OPERATIONS COORDINATOR  
Lia Reutens

DEVELOPMENT

DIRECTOR OF DEVELOPMENT  
Jennifer Drysdale  
  
Corporate Relations  
  
HEAD OF CORPORATE RELATIONS  
Morgan Merrell  
  
CORPORATE RELATIONS OFFICER  
Patricia Laksmono

Philanthropy

HEAD OF MAJOR GIFTS  
David Sutherland  
  
PHILANTHROPY MANAGER  
Lauren Patten  
  
MAJOR GIFTS OFFICER  
Rachel Mink  
Erin Westhoff  
  
PHILANTHROPY COORDINATOR  
Laura Brotodihardjo

MARKETING

DIRECTOR OF MARKETING  
Luke Nestorowicz  
  
ASSOCIATE DIRECTOR, MARKETING  
CAMPAIGNS  
Alison Primmer  
  
HEAD OF DIGITAL  
Andrea Reitano  
  
EDITORIAL MANAGER  
Hugh Robertson  
  
PRODUCER, DIGITAL CONTENT  
Craig Abercrombie  
  
PUBLICITY MANAGER  
Alyssa Lim  
  
SENIOR MARKETING MANAGER  
Douglas Emery  
  
MARKETING MANAGER  
Jess McKenzie  
  
MARKETING ASSOCIATE  
Alex Fontaine  
  
MARKETING COORDINATOR  
Yueling Wu  
  
DIGITAL MARKETING COORDINATOR  
Chris Slavez  
  
HEAD OF CRM  
Lynn McLaughlin  
  
GRAPHIC DESIGNER  
Amy Zhou  
  
Customer Service & Ticketing  
  
HEAD OF CUSTOMER SERVICE &  
TICKETING  
Pim den Dekker  
  
CUSTOMER SERVICE REPRESENTATIVES  
Michael Dowling  
Aiden Atan-Sanchez  
Sami Nelson

OPERATIONS & PRODUCTION

DIRECTOR OF OPERATIONS  
Kerry-Anne Cook  
  
OPERATIONS MANAGER  
Alex Norden  
  
HEAD OF PRODUCTION  
Ross Chapman  
  
PRODUCTION MANAGER  
Elissa Seed  
  
PRODUCTION ADMINISTRATOR  
Milly Herberte  
  
SENIOR PRODUCTION ASSISTANT  
Vico Thai  
  
PRODUCTION ASSISTANT  
Peyton Hawkins  
Georgia Webb

ORCHESTRA MANAGEMENT

DIRECTOR OF ORCHESTRA  
MANAGEMENT  
Aernout Kerbert  
  
ORCHESTRA COORDINATOR  
Emma Winestone

PEOPLE & CULTURE

DIRECTOR OF PEOPLE & CULTURE  
Daniel Bushe  
  
SENIOR ADVISOR, CULTURE & WELLBEING  
Rosie Marks-Smith  
  
PEOPLE & CULTURE/ADMINISTRATIVE  
PROJECTS MANAGER  
Amy Walsh

# THE FUTURE

*is now*

premium  
economy

FLY BETTER

In the future, more airlines will have soft luxurious leather seats, raised footrests and more room to stretch out. They might even have delicious gourmet meals and thousands of entertainment channels. Meanwhile at Emirates, you can fly today. Introducing the new Premium Economy cabin on selected routes.

  
Emirates

\*The new Premium Economy cabin is available on our latest A380 flying between Dubai and Sydney (EK412 and EK413).