

8 March 2024



SCHUMANN'S SECOND SYMPHONY

WITH SIMONE YOUNG

«SYDNEY»
«SYMPHONY»
«ORCHESTRA»

Principal Partner



SYDNEY SYMPHONY ORCHESTRA

PATRON Her Excellency The Honourable Margaret Beazley AC KC

Founded in 1932 by the Australian Broadcasting Commission, the Sydney Symphony Orchestra has evolved into one of the world's finest orchestras as Sydney has become one of the world's great cities. Resident at the iconic Sydney Opera House, the Sydney Symphony Orchestra also performs in venues throughout Sydney and regional New South Wales, and international tours to Europe, Asia and the USA have earned the Orchestra worldwide recognition for artistic excellence.

The Orchestra's first chief conductor was Sir Eugene Goossens, appointed in 1947; he was followed by Nicolai Malko, Dean Dixon, Moshe Atzmon, Willem van Otterloo, Louis Frémaux, Sir Charles Mackerras, Zdeněk Mácal, Stuart Challender, Edo de Waart and Gianluigi Gelmetti. Vladimir Ashkenazy was Principal Conductor from 2009 to 2013, followed by David Robertson as Chief Conductor from 2014 to 2019. Australian-born Simone Young commenced her role as Chief Conductor in 2022, a year in which the Orchestra made its return to a renewed Sydney Opera House Concert Hall. The Sydney Symphony Orchestra's concerts encompass masterpieces from the classical repertoire, music by some of the finest living composers, and collaborations with guest artists from all genres, reflecting the Orchestra's versatility and diverse appeal. Its award-winning education program is central to its commitment to the future of live symphonic music, and the Orchestra promotes the work of Australian composers through performances, recordings and its commissioning program.

PERFORMING IN THIS CONCERT

FIRST VIOLINS

Andrew Haveron
Concertmaster

Harry Bennetts
Associate
Concertmaster

Alexandra Osborne
Associate
Concertmaster

Lerida Delbridge
Assistant
Concertmaster

Fiona Ziegler
Assistant
Concertmaster

Sun Yi
Associate
Concertmaster
Emeritus

Jennifer Booth
Sercan Danis
Claire Herrick
Georges Lentz
Emily Long
Alexandra Mitchell
Alexander Norton
Léone Ziegler

SECOND VIOLINS

Kirsty Hilton
Principal

Marina Marsden
Principal

Emma Jezek
Acting Associate
Principal

Alice Bartsch
Victoria Bihun
Emma Hayes
Shuti Huang
Monique Irik
Wendy Kong
Benjamin Li
Nicole Masters
Emily Qin^o

VIOLAS

Tobias Breider
Principal

Carrie Dennis
Principal

**Anne-Louise
Comerford**
Associate Principal

Justin Williams
Assistant Principal
Sandro Costantino
Rosemary Curtin
Jane Hazelwood
Stuart Johnson
Justine Marsden
Felicity Tsai
Leonid Volovelsky

CELLOS

Catherine Hewgill
Principal

Kaori Yamagami
Principal

Simon Cobcroft
Associate Principal
Fenella Gill
Timothy Nankervis
Elizabeth Neville
Christopher Pidcock
Adrian Wallis

DOUBLE BASSES

Kees Boersma
Principal

Alex Henery
Principal
David Campbell
Dylan Holly
Steven Larson
Richard Lynn
Jaan Pallandi

FLUTES

Emma Sholl
Acting Principal
Carolyn Harris

OBOES

Shefali Pryor
Acting Principal
Callum Hogan

CLARINETS

Oliver Shermacher*
Guest Principal

Alexander Morris
Principal
Bass Clarinet

BASSOONS

Matthew Wilkie
Principal Emeritus
Fiona McNamara

HORNS

Premysl Vojta*
Guest Principal
Marnie Sebire

TRUMPETS

David Elton
Principal
Anthony Heinrichs

TROMBONES

Scott Kinmont
Acting Principal

Nick Byrne

Christopher Harris
Principal
Bass Trombone

TIMPANI

Antoine Siguré
Principal

HARP

Louisic Dulbecco*
Guest Principal

PIANO

Susanne Powell*
Guest Principal

* = Guest Musician
^o = Contract Musician

2024 CONCERT SEASON

TEA AND SYMPHONY

Friday 8 March, 11am

Concert Hall,
Sydney Opera House

SCHUMANN'S SECOND SYMPHONY WITH SIMONE YOUNG CLASSICAL CHARM

SIMONE YOUNG conductor

PEGGY GLANVILLE-HICKS (1912–1990)

Three Gymnopédies (1954)

- i. Lento tranquillo
- ii. Molto tranquillo alla siesta
- iii. Allegretto semplice

ROBERT SCHUMANN (1810–1856)

Symphony No.2 in C, Op.61 (1847)

- i. Sostenuto assai – Allegro, ma non troppo
- ii. Scherzo (Allegro vivace)
- iii. Adagio espressivo
- iv. Allegro molto vivace

Estimated durations

Glanville-Hicks – 15 minutes

Schumann – 40 minutes

The concert will conclude at
approximately 12 noon.

Cover image

Simone Young

Photo by Craig Abercrombie

Principal Partner



CONCERT DIARY

Visit sydneyphilharmonicsymphony.com for more information,
or call our Box Office on (02) 8215 4600

MARCH 2024

Special Event

Friday 15 March, 7pm

Saturday 16 March, 7pm

Concert Hall,
Sydney Opera House

SIMONE YOUNG **CONDUCTS GURRELIEDER**

A SPECTACULAR ROMANCE

Arnold Schoenberg's *Gurrelieder* is a musical tapestry of monumental scale, requiring an orchestra of 140 musicians and a chorus of 285. With musical forces of this size a live performance is likely to be a once in a lifetime experience.

SIMONE YOUNG conductor
SIMON O'NEILL Waldemar
RICARDA MERBETH Tove
DEBORAH HUMBLE Waldtaube
SAVA VEMIĆ Peasant
ANDREW GOODWIN Klaus-Narr
WARWICK FYFE Speaker
**MUSICIANS OF THE AUSTRALIAN NATIONAL
ACADEMY OF MUSIC (ANAM)**
SYDNEY PHILHARMONIA CHOIRS
MSO CHORUS
TSO CHORUS



International Pianists in Recital

Monday 18 March, 7pm

Concert Hall,
Sydney Opera House

VÍKINGUR ÓLAFSSON **PERFORMS BACH'S** **GOLDBERG VARIATIONS**

A STUNNING MUSICAL JOURNEY

VÍKINGUR ÓLAFSSON piano



Emirates Masters Series

Wednesday 20 March, 8pm

Friday 22 March, 8pm

Saturday 23 March, 8pm

Emirates Thursday Afternoon

Thursday 21 March, 1.30pm

Concert Hall,
Sydney Opera House

BEETHOVEN'S THIRD SYMPHONY

VÍKINGUR ÓLAFSSON PERFORMS RAVEL

DEBUSSY arr. Colin Matthews

Four Preludes:

Book I, No.12: Minstrels

Book II, No.3: La puerta del Vino

Book I, No.4: Les sons et les parfums
tournent dans l'air du soir

Book II, No.6: Général Lavine

RAVEL Piano Concerto in G

BEETHOVEN Symphony No.3, Eroica

DONALD RUNNICLES conductor

VÍKINGUR ÓLAFSSON piano



Special Event

Wednesday 27 March, 7pm

Thursday 28 March, 7pm

Concert Hall,
Sydney Opera House

DONALD RUNNICLES **CONDUCTS THE PROTECTING VEIL** AN EXQUISITE UNIVERSE

TAVENER The Protecting Veil

WAGNER Parsifal: Act 3: Good Friday Spell

MENDELSSOHN Symphony No.5, Reformation

DONALD RUNNICLES conductor

MATTHEW BARLEY cello



YOUR CONCERT AT A GLANCE

COMPOSERS

PEGGY GLANVILLE-HICKS (1912–1990)

Three Gymnopédies (1954)

Published in 1954, the year of Schoenberg's *Moses und Aron*, Korngold's *Symphony in F-sharp*, Stockhausen's *Klavierstücke I–V* and Varèse's *Déserts*. Conductor Arturo Toscanini retires.

Tolkein's *Fellowship of the Ring* and William Golding's *Lord of the Flies* are published; Dylan Thomas's *Under Milk Wood* is first broadcast.

Elsewhere Vladimir Petrov's defection rocks Cold War Australia and food rationing in Britain ends.

Peggy Glanville-Hicks was a trailblazing Australian composer, critic and administrator, and a major figure in 20th century music. Although she spent most of her career away from Australia, she returned home in her final decades and left her house Sydney's Paddington to the creation of a residency for Australian composers.

Throughout her life she was fascinated by ancient Greece, and these three dances evoke the hard-won grace and poise that was believed to complement the training of warriors in ancient Sparta.



Peggy Glanville-Hicks in New York

ROBERT SCHUMANN (1810–1856)

Symphony No.2 in C, Op.61 (1847)

Composed in 1845–6 at the time of Mexican American war, repeal of the Corn Laws in Britain, the discovery of Neptune.

Contemporary works include Mendelssohn's *Elijah* and Berlioz's *Damnation of Faust*.

Schumann's Second Symphony reflects aspects of the composer's life and emotions, reminding him, as he said, of the 'dark days' of the previous year when he suffered a breakdown. There is 'moody and unruly' music; an obsessive scherzo with debts to the Baroque, an expressive slow movement; and a finale in which Schumann said 'I first began to feel myself again'.

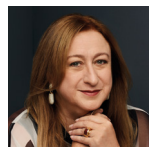


Robert Schumann

ARTISTS

SIMONE YOUNG

conductor





Simone Young. Photo by Peter Bevan-Brew

ABOUT THE ARTISTS

SIMONE YOUNG AM conductor

Sydney Symphony Orchestra's Chief Conductor, Simone Young, has previously held the posts of General Manager and Music Director of the Hamburg State Opera and Music Director of the Philharmonic State Orchestra Hamburg, Music Director of Opera Australia, Chief Conductor of the Bergen Philharmonic Orchestra and Principal Guest Conductor of the Gulbenkian Orchestra, Lisbon and the Lausanne Chamber Orchestra. Her Hamburg recordings include the *Ring Cycle*, *Mathis der Maler* (Hindemith), and symphonies of Bruckner, Brahms and Mahler. She has conducted complete cycles of *Der Ring des Nibelungen* at the Vienna, Berlin and Hamburg State Opera companies.

This year Simone Young will make her much-anticipated Bayreuth Festival debut conducting Wagner's *Ring Cycle*. She also returns to both the Berlin and Vienna State Opera companies, the Berlin, Los Angeles, Stockholm, Oslo and Goeteborg Philharmonic Orchestras, the Bavarian Radio Orchestra and the Lausanne Chamber Orchestra.

2023 saw the commencement of her Sydney Symphony Orchestra *Ring Cycle* with the presentation of *Das Rheingold* which played to sold out audiences, standing ovations and five-star reviews. A second, feature-length documentary film, *Knowing the Score*, about Simone Young and her career was also internationally released in 2023.

Simone Young is regularly invited by the world's great orchestras and has led the New York, Los Angeles, Berlin, Vienna, Munich, Stockholm, New Japan, Helsinki and Dresden Philharmonic Orchestras; the Orchestre Philharmonique de Monte Carlo; Orchestre de Paris; Staatskapelle Dresden; the BBC, San Francisco, Cincinnati, Detroit, Chicago, Dallas, and National Symphony Orchestra. In Australia she has conducted

the West Australian, Adelaide, Melbourne and Queensland Symphony Orchestras and the Australian World Orchestra.

Highly sought-after by the world's leading opera houses, most recently Simone Young has appeared at the Vienna State Opera (*Die Fledermaus* and *Peter Grimes*), The Metropolitan Opera New York (*Der Rosenkavalier*), Opera Nationale de Paris (*Parsifal* and *Salome*), Bavarian State Opera (*Tannhäuser*), Berlin State Opera (*Der Rosenkavalier*) and Zurich Opera (*Salome*).

Simone Young's many accolades include Honorary Member (Ehrenmitglied) of the Vienna State Opera, the 2019 European Cultural Prize Vienna, a Professorship at the Musikhochschule in Hamburg, honorary Doctorates from the Universities of Western Australia and New South Wales, Griffith University and Monash University, the Sir Bernard Heinze Award, the Goethe Institute Medal, Helpmann Award and the Chevalier de l'Ordre des Arts et des Lettres, France.

In February 2024, Simone Young and the Sydney Symphony announced a two-year extension to her contract as Chief Conductor, extending her leadership of the Orchestra until the end of 2026.



Peggy Glanville-Hicks in New York

ABOUT THE MUSIC

PEGGY GLANVILLE-HICKS (1912–1990)

Born in Melbourne, Peggy Glanville-Hicks gained her first serious musical training at the Albert Street, later 'Melba' Conservatorium. Like many an antipodean composer before and since, she then beat the familiar path to Europe for further study, receiving the tutelage of Ralph Vaughan Williams at London's Royal College of Music, Egon Wellesz in Vienna, and Nadia Boulanger in Paris. In 1938 she became the first Australian composer to have a work performed at the International Society for Contemporary Music. Realising that for various reasons neither the UK nor Australia were where she wanted to be, she went to the USA with her first husband, Stanley Bate in 1942. There, as her marriage to the gay and occasionally abusive Bate foundered, she established herself through sheer force of will (and with a little help from the likes of composer and critic Virgil Thomson) as composer, entrepreneur and critic at the New York *Herald Tribune*. She moved for a time to Greece, whose heritage looms large in such works as the operas *Nausicaa* and *Sappho*. She also travelled to countries like Jamaica and India, whose music left its imprint on her work. There were two marriages, one ending in tears, the other in Reno; affairs including one with a sea-captain and one with Errol Flynn's father, and a years-long, mostly unrequited passion for novelist and composer Paul Bowles, which produced the evocative *Letters from Morocco*. The *dramatis personae* of her life – documented by Wendy Beckett, James Murdoch and Suzanne Robinson – also includes the Menuhin family, Indira Gandhi, numerous American composers such as John Cage and Leonard Bernstein, her stage collaborators John Butler, Robert Graves, Lawrence Durrell and Thomas Mann, and fellow Australians like Esther Rofe and Miriam Hyde. In 1975 she returned to Australia, settling in Paddington, NSW, only posthumously receiving the honour and prestige in her native country that she, certainly, felt was her due.

Glanville-Hicks was not alone in pursuing her career as an expatriate; composers like Malcolm Williamson and the late David Lumsdaine worked abroad for most of their professional lives yet remained strongly identified with this country. Glanville-Hicks' musical interests ranged widely: there are elements of Indian, Greek, North African and other non-European musics in her work, but she was nevertheless not here in Australia for the infusion of non-Western musics that inspired the younger generations of Peter Sculthorpe and Richard Meale, Barry Conyngham, Anne Boyd and Ross Edwards, and was out of sympathy with composers who sought to develop the ideas of the post-war avant-garde here (or, heaven forbid, write electronic music).

Glanville-Hicks bequeathed her terrace house in inner-Sydney Paddington as a refuge for composers, especially those in the danger zone between being an Exciting Young Composer and a Respected Senior Figure, offering them the chance to work in a pleasant environment without the stress of having to find money for the rent.

ABOUT THE MUSIC

Three Gymnopédies (1954)

In 1935, four young Australians went on a walking tour in Spain and Portugal, ‘seemingly’, as James Murdoch notes, ‘unaware of the impending civil war’.

Two – Peggy Glanville-Hicks and Esther Rofe – were aspiring composers; with them were Glanville-Hicks’ brother Garth and the incipient Melbourne architect Robert Eggleston.

Glanville-Hicks was a student and devotee of Ralph Vaughan Williams, and was perhaps inspired by his example to compose a work based on the demotic music that she heard on the Iberian Peninsula. A *Spanish Suite* duly followed, consisting of a Pavane, Serenade, Siesta, Fandango, and Nocturne, according to Murdoch the score was largely lost in the London bombings of World War II. Around the same time, the peripatetic composer produced a miniature *Pastoral* for piano in Vienna in 1936, and a recorder trio which was first performed, she said, ‘in a snowbound cabin on a skiing weekend in Tirol.’

From 1941 Glanville-Hicks lived in the United States, establishing herself as composer and critic, notably for the New York *Herald Tribune*. As scholar Suzanne Robinson recounts, Oliver Daniel, a composer and arts administrator (notably in broadcast music) suggested to Glanville-Hicks that there was a market for short (roughly three-minute) instrumental pieces that could function as ‘interstitials’, slotted in between broadcasts that ran short.

Fortunately at least some of the *Spanish Suite* and the pieces composed in Austria had survived, and Glanville-Hicks repurposed the material for her *Three Gymnopédies*.



Glanville-Hicks in Greece

The title, of course, is familiar from the three simple, popular piano works of Erik Satie that bear it, but the name itself (meaning ‘naked’ or ‘unarmed youth’) derives from a ritual much loved in the ancient Greek city of Sparta, in which three choruses of young, mature, and older men danced. Glanville-Hicks’ take was that ‘when the athletes had acquired strength, velocity, skill, they had then to reacquire grace, and to that end slow, graceful dances were practised.’ Originally the set began with the *Molto tranquillo* and concluded with the *Lento*, before the composer settled on having the fastest movement last.

The scoring is characteristic of a composer for whom harmony was overrated as a musical parameter: the solo oboe creates a mood of antique nostalgia, while the transparent textures of the string band are pointed by deft use of harp and celesta. Vaughan Williams’ modality and use of repeated short motifs is a clear model in the opening dance. The second, of course, shows its Spanish origins in various ways, while the Allegretto, as Robinson notes, takes a four-note theme from the *Pastoral*.

Peggy Glanville-Hicks’ *Three Gymnopédies* are scored for strings, oboe, harp and celesta.

The Sydney Symphony Orchestra first performed *Gymnopédie No.1* in our 2022 People’s Choice concert under Chief Conductor Simone Young. Today’s concert marks the Orchestra’s first performance of the set of three, however they were recorded for ABC Classic in 1986 with conductor Myer Fredman.

ABOUT THE MUSIC

ROBERT SCHUMANN (1810–1856)

Robert Schumann was born in the Saxon city of Zwickau, where his father was a successful writer, translator (notably of English Romantic writers like Byron into German) and book-seller. Child Robert began writing his own plays and poetry, as well as composing, in his teens. At 18 he went to Leipzig to study law, where he also began piano lessons with renowned pedagogue Friedrich Wieck, father of the then nine-year old virtuoso Clara.

After a year at the University of Heidelberg, Schumann returned to Leipzig in 1830, bent on becoming a musician. His first mature compositions include the *Abegg Variations*, with their theme that ‘spells’ the name of the work’s fictional dedicatee, and *Papillons*, the first of many collections of musical miniatures grouped around a poetic theme. It is at this time, too, that Schumann came under the influence of two arch-Romantic writers: Jean Paul Richter and ETA Hoffmann. In his diaries he creates fictional pseudonyms for Wieck, Clara and himself, included the characters of Florestan (representing Schumann’s virtuosic side) and Eusebius (his more introverted side). These characters would assume great importance in his music, particularly *Carnaval*, which dramatises Schumann’s (and that of his fellow *Davidsbündler* – ‘members of the league of David’) battle against philistinism in the arts. He prosecuted this also in the serious music criticism which he practically invented, founding *Die Neue Zeitschrift für Musik* (New Journal for Music) which began publication in 1835.

Robert had fallen in love with Clara when she was 15 and the couple married in 1840, when Clara was 21. The next years saw Clara consolidate her fame as a pianist; Robert, owing to repetitive strain injury (not, as Wieck asserted, caused by using a device to increase his stretch) incurred in the mid-1830s, had given up hope of coming a virtuoso. From 1840,

determined to ‘master all the forms of music’ he composed in various genres, spending roughly a year on each: song (1840), orchestral music (1841), chamber music (1842), the oratorio (1843), producing several works in each genre in concentrated bursts. In 1844 he suffered a bad episode of the depression which had affected him since 1833, but emerged with new confidence in his craft.

This period saw the Schumanns move to Dresden where Robert turned his attention to the stage. In 1850 they moved to the Rhineland city of Düsseldorf where Robert became municipal music director. Musical standards were low, and Schumann’s health poor. One bright spot was the arrival, in 1853, of young Johannes Brahms, whom Schumann immediately realised was a genius and welcomed into his home.

Sadly, Schumann’s illness returned in 1854 with aural hallucinations, delusions and memory loss, and he attempted suicide by throwing himself into the Rhine. He lived out his last two years in a strikingly benign asylum near Bonn; but on doctor’s orders was forbidden to see Clara until two days before he died.



Robert Schumann

ABOUT THE MUSIC

Symphony No.2 in C, Op.61 (1847)

Schumann's Second Symphony begins with a motto theme. This assertive repetition of the tonic then the dominant chord may or may not be a reference to the identical opening of Joseph Haydn's Symphony No.104. Schumann's use of his motto to unify the symphony, making it return in three of the four movements, also recalls Beethoven, and especially that composer's Fifth Symphony. Schumann belonged to the first generation of composers who wrote in full awareness and sometimes in awe of what their great predecessors had done. Any symphony composed in Germany in 1845 was written for audiences for whom Haydn, Mozart, and especially Beethoven provided the models of what a symphony should be. Felix Mendelssohn, who conducted the first performances of Schumann's First and Second Symphonies, had done much to create this public awareness of past music in his representative programs at the Leipzig Gewandhaus. The Second Symphony pays tribute to Mendelssohn, with whom Schumann had an exceptionally close artistic collaboration. But by the already backward-looking standards set by its first critics, Schumann's symphonies did not seem Classical enough, nor were their novelties convincing. Even a sympathetic musical colleague of Schumann's in Leipzig, Moritz Hauptmann, found the First Symphony 'somewhat curious, but always musical'.

The curiousness is just what makes Schumann's symphony original. The form may be classical, but the language is new. Even as the motto is being stated – not with Haydn's luminous clarity, but with what has been well described as a 'mysteriously muted solemnity' – another theme is outlined by the strings, rather ominous and chromatically creeping. This begins a movement Schumann described as of a 'very moody and unruly character'. As he was about to begin the symphony, he wrote

to Mendelssohn that for several days he had been hearing drums and trumpets in C major – 'I don't know what will come of it.' The trumpets and drums are not in the first statement of the motto, but they are there, with a vengeance, when it returns in the first movement recapitulation. The symphony, written with great difficulty and, according to Schumann himself, documenting in music his recovery from serious illness, demands to be 'read', or rather heard, for its sub-text, a record of a changing mental state, from despair, through healing, to redemption.

Between Schumann's First Symphony of 1841 and the Second, begun in late 1845, came his serious nervous breakdown beginning in 1844, marked by depression and lapses of memory. On his doctor's advice he moved from Leipzig to the quieter Dresden. He finished the Piano Concerto for his wife Clara, but both Schumanns saw in the symphony the sign of his full recovery, and a return of confidence to attempt large-scale orchestral works. Schumann's tribute to Clara's support is encrypted in the symphony's finale. The difficulties did not end with the burst of creativity which saw the symphony drafted in piano score in December 1845. Schumann had to put the orchestration aside when he had an attack of ringing and clicking in the ears in 1846. The symphony's premiere was conducted by Mendelssohn in the Leipzig Gewandhaus on 5 November 1846, but Schumann made many changes, including adding the trombones, before the second performance 11 days later. The inseparability of the creation of the music from Schumann's mental and physical state appears in his admission: 'In the finale, I first began to feel myself again; and indeed, I was much better after I had completed the work.'

ABOUT THE MUSIC

Schumann did indeed master his materials, and created a new kind of Romantic symphony inside a Classical scaffolding. This has been increasingly recognised, against those who find in Schumann's formal devices – such as mottos – simplistic attempts at thematic unity, and in the poetic element, with its wealth of references and associations, parentheses rather than the 'real', convincing thread of the music. The struggle of the first movement is a real one: from the slow introduction with its germinal themes the music seems almost with difficulty to gear itself up to begin a fast movement 'but not too fast', and the development section is very long – the working-out is not straightforward. The victory is not yet won, in spite of the return of the motto.

Schumann owed much to Mendelssohn's advice, not least on the orchestral scoring at which he was a novice. It seems Mendelssohn suggested the transfer of the theme in triplets in the first of the *Scherzo's* two trios from strings to winds. This movement, which comes second, is the most explicit tribute by imitation to Mendelssohn of many in Schumann's first two symphonies. Much in the brilliant non-stop dashing of the strings sounds Mendelssohnian, as do some of the wind interventions. But this is no 'fairy scherzo'. The music is restless, and as Michael Steinberg notices, 'a layer of melancholy underlies the jocularity.' The two trios give complete contrast from the *perpetuum mobile*. In the second, a fugato section points to the B-A-C-H fugues for pedal piano Schumann had been writing in 1845 as part of an intensive study of Bach's music. At one point the notes B-A-C-H (B flat, A, C, B natural) can be heard played in longer values by the first violins.

Schumann's dialogue with Mendelssohn continues, Steinberg suggests, in the slow movement. In this Romantic and eloquent music Schumann seems to be saying,

'I am not Mendelssohn.' Again there is a fugato section, where the strings are joined by what Schumann called 'the melancholy bassoon'. The movement starts in C minor, but ends in E flat major – it is full of felicitous scoring, for the wind soloists in particular, and has always escaped critical strictures. The conductor Felix Weingartner considered this 'the best movement in all of [Schumann's] four symphonies'.

Especially after Beethoven's Ninth Symphony, the finale had become a challenge to composers to clinch the whole symphony with a telling conclusion. Given Schumann's 'program' in this symphony, he was seeking an expression of victory over the dark, disturbing forces. This movement falls into two parts, the second so substantial that it has struck some as a 'finale in the finale'. As in the first movement, the first part is dominated by a single rhythmical pattern, to which the theme of the slow movement provides a contrast, when it is introduced as a second subject. Then come a series of pauses, punctuated by string chords, following which Schumann introduces as new material a quotation from Beethoven's song cycle *To the Distant Beloved*. This reference, which he has already made in his C major *Fantasie* for solo piano, was to Clara. In the symphony it leads to a long and exultant conclusion, in which the opening motto is gradually reintroduced, shedding the mystery in which it was first heard, and affirming the light.

Robert Schumann's Second Symphony is scored for pairs of flutes, oboes, clarinets, bassoons, horns and trumpets, three trombones, timpani and strings.

The Sydney Symphony first performed the work in Newcastle, Lismore and Grafton, on tour with Eugene Goossens in 1948. We first performed the symphony in Sydney in 1952, again with Goossens, and most recently at Sydney Town Hall in 2021, conducted by Asher Fisch.

**Composer biographies, Glanville-Hicks
© Gordon Kerry 2024**

Schumann © David Garrett 2005

SUBSCRIBERS GET THE BEST BENEFITS

Support great music and receive the best Sydney Symphony experience by becoming a 2024 subscriber.

BEST SEATS



Receive first access to the best seats across our venues.

BEST PRICING



Get the best ticket prices for all your concerts.

PRESALE ACCESS



Exclusive presale access to all our concerts before tickets go on sale to the general public.

EXCLUSIVE OFFERS



Unlock more than 20 offers from our partners for parking, restaurants, bars and travel.

FLEXIBILITY



If your plans change, enjoy the flexibility of exchanging your tickets into any concert across the 2024 Season, with no additional fees.*



BOOKING IS SIMPLE

sydneysymphony.com

Or call 8215 4600

Principal Partner



*Upgrade costs may apply. For full details and terms visit sydneysymphony.com/terms or call 8215 4600.

SYDNEY SYMPHONY ORCHESTRA



Simone Young AM
Chief Conductor



Donald Runnicles
Principal Guest Conductor



Vladimir Ashkenazy
Conductor Laureate



Andrew Haveron
Concertmaster
Vicki Olsson Chair

FIRST VIOLINS

Harry Bennetts

Associate Concertmaster
Judy & Sam Weiss Chair

Alexandra Osborne

Associate Concertmaster

Lerida Delbridge

Assistant Concertmaster
Simon Johnson Chair

Fiona Ziegler

Assistant Concertmaster
*Webb Family Chair, in memory
of Dr Bill Webb & Helen Webb*

Sun Yi

Associate Concertmaster
Emeritus

Jenny Booth

Brielle Clapson

Sophie Cole

Sercan Danis

Claire Herrick
Russell & Mary McMurray Chair

Georges Lentz

Emily Long

*In memory of Dr Margot Harris
Chair*

Alexandra Mitchell

Alexander Norton

Anna Skálová

Léone Ziegler

SECOND VIOLINS

Kirsty Hilton

Principal
*A/Prof Keith Ong & Dr Eileen
Ong Chair*

Marina Marsden

Principal

Marianne Edwards

Associate Principal
Dr Rebecca Chin & Family Chair

Emma Jezek

Assistant Principal

Alice Bartsch

Victoria Bihun

Rebecca Gill

*Dr John Lam-Po-Tang Chair,
in memory of Reg & Jeannette
Lam-Po-Tang*

Emma Hayes

Shuti Huang

Monique Irik

Wendy Kong

Benjamin Li

Nicole Masters

Nora Goodridge OAM Chair

Maja Verunica

VIOLAS

Tobias Breider

Principal
*Roslyn Packer AC
& Gretel Packer AM Chair*

Carrie Dennis

Principal

Anne-Louise Comerford

Associate Principal
White Family Chair

Justin Williams

Assistant Principal
L Alison Carr Chair

Sandro Costantino

Rosemary Curtin

John & Jane Morschel Chair

Jane Hazelwood

*Bob & Julie Clampett Chair,
in memory of Carolyn Clampett*

Graham Hennings

Stuart Johnson

Justine Marsden

Felicity Tsai

Amanda Verner

Leonid Volovelsky

CELLOS

Catherine Hewgill

Principal
*The Hon. Justice AJ &
Mrs Fran Meagher Chair*

Kaori Yamagami

Principal

Simon Cobcroft

Associate Principal

Leah Lynn

Assistant Principal

Kristy Conrau

Fenella Gill

Timothy Nankervis

Elizabeth Neville

*Bob Magid OAM
& Ruth Magid Chair*

Christopher Pidcock

Adrian Wallis

DOUBLE BASSES

Kees Boersma

Principal
*Council Chair, with lead
support from Brian Abel*

Alex Henery

Principal

David Campbell

Dylan Holly

Steven Larson

Richard Lynn

Jaan Pallandi

Benjamin Ward

FLUTES

Joshua Batty

Principal

Emma Sholl

Associate Principal
*Robert & Janet Constable
Chair*

Carolyn Harris

*Landa Family Chair,
in memory of Dr Barry Landa*

OBOES

Diana Doherty

Principal
John C Conde AO Chair

Shefali Pryor

Associate Principal

Callum Hogan

COR ANGLAIS

Alexandre Oguey

Principal
Mackenzie's Friend Chair

CLARINETS

Francesco Celata

Associate Principal
John Curtis AM Chair

Christopher Tingay

BASS CLARINET

Alexander Morris

Principal

BASSOONS

Todd Gibson-Cornish

Principal
Nelson Meers Foundation Chair

Matthew Wilkie

Principal Emeritus
Nelson Meers Foundation Chair

Fiona McNamara

Nelson Meers Foundation Chair

CONTRABASSOON

Noriko Shimada

Principal

HORNS

Samuel Jacobs

Principal

Geoffrey O'Reilly

Principal 3rd

Euan Harvey

Marnie Sebire
Judge Robyn Tupman Chair

Rachel Silver

Sue Milliken AO Chair

TRUMPETS

David Elton

Principal
Anne Arcus Chair

Brent Grapes

Associate Principal

Cécile Glémot

Anthony Heinrichs

TROMBONES

Ronald Prussing

Principal

Scott Kinmont

Associate Principal
Audrey Blunden Chair

Nick Byrne

Robertson Family Chair

BASS TROMBONE

Christopher Harris

Principal

TUBA

Steve Rossé

Principal

TIMPANI

Antoine Siguré

Principal

Mark Robinson

Associate Principal/
Section Percussion
*Robert Albert AO &
Elizabeth Albert Chair*

PERCUSSION

Rebecca Lagos

Principal
I Kallinikos Chair

Timothy Constable

Christine Bishop Chair

MUSICIAN PROFILE



CATHERINE HEWGILL

Principal Cello

The Hon. Justice AJ & Mrs Fran Meagher Chair

How long have you been playing with the Sydney Symphony?

34 years

What has been the highlight of your Sydney Symphony career so far?

Managing to perform the Brahms Double Concerto fourteen months after crushing all the bones in my wrist – and realising that my career had not ended.

Who is your favourite composer to perform, and who is your favourite composer to listen to?

I love to perform Mahler...the architecture, the intensity, the passion...

To listen to? Bach. Like a musical religion, so pure.

When did you realise that you could make a career out of music?

After five minutes of playing the cello. I loved it too much to ever doubt myself.

What was the last book, podcast or TV series you really loved?

Small Things Like These by Claire Keegan – short enough to read between practice sessions, thought provoking, no words wasted ... just like Mozart's 'Jupiter' Symphony which wastes no notes. And *White Lotus*, of course.

Do you have any pre-concert rituals or superstitions?

Enter the stage on the violin side for rehearsals, then the cello side on the night of the performance. And always wipe the rosin off the bow after the final rehearsal, or beware!

What is the best piece of advice you ever received – either musical or general?

Musical advice: make sure to find a reason for the way you play every note, and think of the space between your shoulder blades.

General advice: in order to have friends you need to be a friend.

FROM THE ARCHIVES



1948 – CARRYING ORCHESTRAS TO NEWCASTLE

The Sydney Symphony's first Chief Conductor, Eugene Goossens (1947–1956) takes a ride in the driver's compartment of a train – possibly on the 1948 tour of NSW during which the Orchestra first performed Beethoven's Second Symphony.

A long-serving member of our viola section, Helen Bainton, recalled a similar scene in her memoir *Facing the Music*:

'[Goossens] had a passion for trains and it was said he owned one of the largest collections of pictures of them in America. During his travels he had once driven the Ohio express ten miles, which he found a most exhilarating experience because he loved the feeling of controlling a powerful machine. On one of our tours he travelled up to Newcastle, New South Wales, sitting in the driver's cabin. Rumour had it, of course, that he was actually driving us so that we wondered if we would reach our destination alive, but when we arrived in Newcastle he stepped off the train as urbane as ever, even though he was dressed in dungarees and an old cap, with a somewhat grubby face and carrying an oily rag in his hand! The welcoming committee received a shock when they saw their famous conductor, but as usual he was the complete master of the situation and enjoyed himself hugely.'

Helen Bainton – *Facing the Music* (Currawong Publishing Co., Sydney, 1967)

THANK YOU

VISIONARIES

Brian Abel
Geoff Ainsworth ^{AM}
& Johanna Featherstone
The Berg Family Foundation
Robert & Janet Constable
Crown Resorts Foundation
The Estate of Helen Gordon
Dr Richard Henry ^{AM}
& the late Dr Rachel Oberon
Dr Gary Holmes
& Dr Anne Reeckmann
In memory of Ian Alfred Lindsay
Mackenzie's Friend
Bob Magid ^{OAM} & Ruth Magid
Vicki Olsson
Oranges & Sardines Foundation
Roslyn Packer ^{AC}
(President, Maestro's Circle)
Packer Family Foundation
Nigel & Carol Price
Patricia H Reid Endowment
Pty Ltd
Doris Weiss & the late Peter
Weiss ^{AO} *(President Emeritus,
Maestro's Circle)*
Judy & Sam Weiss
Wilson Foundation

MAESTRO'S CIRCLE

Antoinette Albert
Robert Albert ^{AO}
& Elizabeth Albert
Terrey Arcus ^{AM} & Anne Arcus
Christine Bishop
Dugald Black
The Estate of Patricia Blau
In memory of Ian Brady
Dr Rebecca Chin
John C Conde ^{AO}
Ian Dickson ^{AM} & Reg Holloway
Edward & Diane Federman
Nora Goodridge ^{OAM}
In memory of Dr Margot Harris
Ingrid Kaiser
I Kallinikos
Dr Rachael Kohn ^{AO}
& Tom Breen
Dr John Lam-Po-Tang
Sharon & Anthony Lee
Foundation

Susan Maple-Brown ^{AM}
Catriona Morgan-Hunn
Nelson Meers Foundation
A/Prof Keith Ong
& Dr Eileen Ong
Paul Salteri ^{AO} & Sandra Salteri
In memory of Mrs W Stening
In memory of Dr Bill Webb
& Helen Webb
Kathy White
Caroline Wilkinson ^{OAM}
Ray Wilson ^{OAM}, in memory of
James Agapitos ^{OAM}
June & Alan Woods
Family Bequest

PATRON'S PROGRAM \$15,000+

Ainsworth Foundation
Doug & Alison Battersby
Audrey Blunden
Professor Ina Bornkessel
-Schlesewsky & Professor
Matthias Schlesewsky
L Alison Carr
Darin Cooper Foundation
Heather & Malcolm Crompton
John Curtis ^{AM}
Paolo Hooke
Simon Johnson
Justice Francois Kunc
& Felicity Rourke
In memory of Peter Lazar ^{AM}
Roland Lee
Warren & Marianne Lesnie
Helen Lynch ^{AM} & Helen Bauer
Russell & Mary McMurray
The Hon. Justice AJ Meagher
& Fran Meagher
Geoffrey Robertson ^{AO}
Graeme Robertson
Tim Robertson ^{SC}
James Stening
Howard Tanner ^{AM}
& Mary Tanner
Judge Robyn Tupman
Ken & Linda Wong
Yim Family Foundation

PATRONS PROGRAM \$10,000+

Rob Baulderstone
& Mary Whelan
Daniel & Drina Brezniak
Hon J C Campbell ^{KC}
& Mrs Campbell
Bob & Julie Clampett
Howard & Maureen Connors
Michael Dowe
Richard A Flanagan III
Carolyn Githens
Dr Bruno & Rhonda Giuffre
The Greatorex Fund
The Hilmer Family Endowment
Kimberley & Angus Holden
Peter M Howard
Jim & Kim Jobson
Karin Keighley
Levins Family Foundation
Dr Lee MacCormick Edwards
Charitable Foundation
Sue Milliken ^{AO}
John & Jane Morschel
Emeritus Professor
Robert Ouvrier ^{AC}
& the late Margaret Ouvrier
Dr Dominic Pak & Cecilia Tsai
Stephen Perkins
Kenneth R Reed ^{AM}
The Ross Trust
Penelope Seidler ^{AM}
Dougall & Elizabeth Squair
Geoff Stearn
Tony Strachan
Arlene Tansey
Dominic Taranto
& Anthony Cassidy

**SUPPORTERS PROGRAM
\$5,000+**

Colin & Richard Adams
Stephen J Bell
Dr Victor Bien
& Silvana d'Iapico
Minnie Biggs
Beverley & Phil Birnbaum
Boyarsky Family Trust
In memory of Rosemary Boyle
(Music Teacher)
Roslynn Bracher AM
Maggie Brown
Miguel Carrasco
& Renee Martin
In memory of Ann Lesley Carter
Cecily Cathels
Margot Chinneck
Roxane Clayton
B & M Coles
Ewen Crouch AM
& Catherine Crouch OAM
Donus Australia Foundation
Limited
Suellen & Ron Enestrom
Sarah & Tony Falzarano
Leonie & James Furber
Dr Greg Gard
& Dr Joanne Grimsdale
Dr Colin Goldschmidt
Dr Jan Grose OAM
Jill Hickson AM
James & Yvonne Hochroth
Stephen Johns
& Michele Bender
Andrew Kaldor AM
& Renata Kaldor AO
John & Sophia Mar
Helen Meddings
& the late Phil Meddings
In memory of Kevin Morris
& Des McNally
Jackie O'Brien
Andrew Patterson
& Steven Bardy
Suzanne Rea
& Graham Stewart
Dr Wendy Roberts
Chris Robertson & Kate Shaw
Sylvia Rosenblum

Rod Sims AO & Alison Pert
Dr Vera Stoermer
J.R.Strutt
Kevin J. Troy
Russell Van Howe
& Simon Beets
Geoff & Alison Wilson
Dr John Yu AC

**SUPPORTERS PROGRAM
\$2,500+**

Dr Richard Balanson
& Dawn Talbot
Michael Ball
David Barnes
Judith Bloxham
Peter Braithwaite
& Gary Linnane
In memory of R W Burley
Ian & Jennifer Burton
Anne Carmine
Dr Paul Collett
Elizabeth Conti
Vanessa Cragg
& the late Ronald D Cragg OAM
Debby Cramer & Bill Caukill
Katarina Cvitkovic
Emeritus Professor John Daly
and the late R. Neil Steffensen
Susan & Roger Doenau
Emeritus Professor
Jenny Edwards
John Ellacott
Malcolm Ellis & Erin O'Neill
John Favaloro
AM Gregg & DM Whittleston
Peter & Yvonne Halas
Richard Hansford
Dr Joanne Hart & Adam Elder
Alan Hauserman & Janet Nash
Sue Hewitt
Roger Hudson
& Claudia Rossi-Hudson
In memory of Joan Johns
Dr Owen Jones
& Vivienne Goldschmidt
Terry & Helen Jones
Anna-Lisa Klettenberg
A/Prof Winston Liauw
& Ellen Liauw

Liftronic Pty Ltd
Mei Sien Loke
Dr Carolyn Lowry OAM
& Peter Lowry OAM
In memory of Wes Maley
David Maloney AM
& Erin Flaherty
Margaret McKenna
Dr V Jean McPherson
James & Elsie Moore
Karen Moses
Janet Newman
Christopher Nicolosi
Graham Quinton
Andrew Rosenberg
Tony Schlosser
Barbara & Bruce Solomon
Prof Vladan Starcevic
Cheri Stevenson, in memory
of Graham
Jane Thornton OAM
& Peter Thornton
Dr Alla Waldman
Natalie Yamey

THANK YOU

PRINCIPAL PARTNER



GOVERNMENT PARTNERS



The Sydney Symphony Orchestra is assisted by the Australian Government through Creative Australia, its principal arts investment and advisory body.

The Sydney Symphony Orchestra is supported by the NSW Government through Create NSW.

PREMIER PARTNER



MAJOR PARTNER



ADVISORY PARTNER

Allens <<
Linklaters

PLATINUM PARTNER

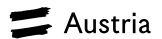


GOLD PARTNERS

CoxswainAlliance
Navigate change®



SILVER PARTNERS



BRONZE PARTNERS

INDUSTRY PARTNERS



FOUNDATIONS



PATRON

Her Excellency The Honourable
Margaret Beazley AC KC

BOARD

Geoff Wilson
Chair
Andrew Baxter
Deputy Chair
Geoff Ainsworth AM
William Barton
Kees Boersma
Rosemary Curtin
Susan Ferrier
The Hon. Justice AJ Meagher
Kate Shaw
Julie Sibraa
Craig Whitehead

COUNCIL

Professor The Honourable
Dame Marie Bashir AD CVO
*Patron Emeritus, Sydney Symphony
Orchestra Council*
Anne Arcus
Terrey Arcus AM
Brian Abel
Christine Bishop
Dr Rebecca Chin
Paul Colgan
John C Conde AO
Catherine Crouch OAM
Ewen Crouch AM
The Hon. John Della Bosca
Alan Fang
Johanna Featherstone
Hannah Fink
Erin Flaherty
Dr Stephen Freiberg
Dorothy Hoddinott AO
Dr Gary Holmes
Robert Joannides
Michelle Anne Johnson
Simon Johnson
Dr John Lam-Po-Tang
Gary Linnane
Helen Lynch AM
David Maloney AM
Danny May
Fran Meagher
Taine Moufarrige
Dr Eileen Ong
Andy Plummer
Deirdre Plummer
Seamus Robert Quick
Dr Anne Reeckmann
Chris Robertson
Paul Salteri AO
Sandra Salteri
Rachel Scanlon
Juliana Schaeffer
Ali Smyth
Fred Stein OAM
James Stening
Russell Van Howe
Mary Whelan
Brian White AM
Kathy White
Rosemary White
Andrew Wiseman

HONORARY COUNCIL

Ita Buttrose AC OBE
Donald Hazelwood AO OBE
Yvonne Kenny AM
Wendy McCarthy AO
Dene Olding AM
Leo Schofield AM

MANAGEMENT & STAFF

Craig Whitehead
Chief Executive Officer
Sheridan Morley
Executive Officer

ARTISTIC PLANNING

Melissa King
Director of Artistic Planning
Sam Torrens
Artistic Planning Manager
Karl Knapp
*Senior Producer,
Artistic Planning*
Ilmar Leetberg
Artist Liaison Manager
Hannah Cui
Artistic Administrator

LIBRARY

Alastair McKean
Head of Library Services
Victoria Grant
Library
Mary-Ann Mead
Library

LEARNING & ENGAGEMENT

Sonia de Freitas
Head of Education & Communities
Meklit Kibret
*Education & Community Engagement
Producer*
Daniella Pasquill
*Education and Communities Program
Administrator*
Alice Jarman-Powis
*Education & Communities Booking
Assistant*

BUSINESS SERVICES

Sarah Falzarano
Director of Finance
Daniela Ramirez
Finance Manager
Minerva Prescott
Accountant
Emma Ferrer
Accounts Assistant
Laura Soutter
Payroll Manager
Jonathan Zaw
IT Manager

DEVELOPMENT

Jennifer Drysdale
Director of Development

CORPORATE RELATIONS

Morgan Merrell
Head of Corporate Relations
Chloe Bassingthwaight
Corporate Relations Officer

PHILANTHROPY

Lauren Patten
Head of Philanthropy
Patricia Laksmono
Events Officer
Rachel Mink
Development Manager

Laura Brotodihardjo
Philanthropy Officer
Gabriela Postma
Philanthropy Coordinator

MARKETING

Mark Elliott
Director of Marketing
Alison Primmer
*Associate Director,
Marketing Campaigns*
Andrea Reitano
Head of Digital
Hugh Robertson
Editorial Manager
Craig Abercrombie
Producer, Digital Content
Belinda Dyer
Kabuku PR
Douglas Emery
Senior Marketing Manager
Nicola Solomou
Marketing Manager
Alex Fontaine
Marketing Associate
Chris Slavez
Digital Marketing Coordinator
Lynn McLaughlin
Head of CRM
Amy Zhou
Graphic Designer
Ann He
Marketing Coordinator

CUSTOMER SERVICE & TICKETING

Pim den Dekker
Head of Customer Service & Ticketing
Laura Clark
Customer Service & Ticketing Supervisor
Michael Dowling
Customer Service Representative
Aiden Atan-Sanchez
Customer Service Representative
Sami Nelson
Customer Service Representative

OPERATIONS & PRODUCTION

Kerry-Anne Cook
Director of Operations
Ross Chapman
Head of Production
Elissa Seed
Production Manager
Tom Farmer
Senior Production Support
Aeva O'Dea
Operations Manager
Jacinta Dockrill
Production Administrator

ORCHESTRA MANAGEMENT

Aernout Kerbert
Director of Orchestra Management
Brighdie Chambers
Orchestra Manager
Emma Winestone
Orchestra Coordinator

PEOPLE & CULTURE

Daniel Bushe
Director of People & Culture
Rosie Marks-Smith
Senior Advisor, Culture & Wellbeing
Amy Walsh
*People & Culture/Administrative Projects
Manager*
Kevan Mooney
Health & Safety Officer

A perfect
ARRANGEMENT



SYDNEY
SYMPHONY
ORCHESTRA

Principal Partner



FLY BETTER

As Principal Partner of the Sydney Symphony Orchestra, we know how to exceed audience expectations. That's why you can choose from a varied gourmet menu and enjoy fine dining at any time with our hand-picked exclusive wines, perfectly arranged.

